



ADELAIDE Art Society

112 Margaret Street, North Adelaide 5006 Phone 0882674226

May 2022

<http://www.adelaideartsociety.com.au>

PRESIDENTS' NOTES

Covid, covid, covid, the on again off again rules and restrictions are hard to keep up with! But here we are with no restrictions now, except for places of high risk. We have adopted to leave it to individuals to decide whether to wear masks and asked that if feeling ill or off colour to stay home, if exhibiting covid symptoms to take a RA or PCR test. There is no requirement to sign in with contact tracing now, we have removed the QR codes. The restriction of not having shared food has been lifted, therefore we can reinstate our supper on social nights and snacks at sketch groups breaks.

We have been maintaining a schedule of art demonstrations at social nights and works shops which have been very successful and well attended, apart from email notifications to our members, information can be found on our website <http://www.adelaideartsocietyinc.com.au/events/13/>.

The committee decided to remove the old gas space heater and use the new higher output air conditioners as the means of heating the studio. This was done to reduce the cost of heating and as we have solar panels it makes sense to use the energy we make. In the cooler months both units are programmed to come on one hour before the sketch group begins and turn off when finished. The temperature and fans can be changed during the session, but if they are turned off, they can't be restarted during that session. This system is proving very successful and is giving us a cash saving.

The AGM is approaching and will be held as last year at the new time and day, which was very successful, with the meeting starting at 7.30 pm on the 29th of July. A notification will be sent to the membership several days before the meeting. I would like every member to think about nominating to be a committee member which gives you the opportunity to have a part in the future course of the society.

Also, three of the selection committee are standing down so if you think a member would be a good selector, please ask them and with their agreement nominate them. No self-nominations please.

My thanks go to our wonderful committee who put a lot of time and effort into your society and a big thanks to Marg Lynch for publishing our newsletters.

EXHIBITIONS

Our Autumn exhibition was a fantastic cross section of the excellent work and variety of subjects, styles and mediums of our members. There were around about one hundred works entered including three sculptures. The selectors, who I thank for their dedication to ensuring our exhibitions are of the highest standard, chose all but three as being of the high standard required for our selected exhibitions. Our featured society member was Marg Lynch, who exhibited an amazing wall of work from her local environment and from her many painting trips to Europe. Marg spoke about works, identifying many with stories of their origin.

Renowned water colour artist, Alan Ramachandran, who was our guest speaker, delivered a fascinating talk about the excellence of the Society and the importance of composition when planning a two-dimensional work. On behalf of the society, I thank Alan for agreeing to open the exhibition. I'm pleased to report that six works were sold, much to the pleasure of the artists concerned.

Our next exhibition is the Winter exhibition which opens on the 16th of July and closing on the 31st July, receiving of entries is Saturday the 9th of July, 1.30 – 3.30pm, please read the conditions of entry here <http://www.adelaideartsocietyinc.com.au/exhibitions/>.

Winston Head

SOCIETY NEWS

Welcome to new members, Jeffrey Turvey and Alex Grant.

Congratulations to Eliza Au for winning the **People's Choice Award**, Autumn Exhibition



Susan Lewis won the Best in Exhibition at the Clare Rotary Art Show (Acquisitive Prize) with her painting, "The Bathroom"

Next Social Night Friday 27th May at 7.30pm

Toni Corso - Impressionist acrylic artist

Toni gained her art education at the North Adelaide School of Art and began her teaching career in the early 1970s in various schools around Adelaide and in South Australia. She successfully raised four children and once they were grown up in the late 1990s, she again felt the urge to get back into her own painting.

Toni has since executed many works on commission both locally, interstate and overseas. She has held numerous exhibitions, been an Artist in Residence and continued to teach art and design in high schools.

Toni has also produced greeting cards, art prints and a calendar. Her work is full of vitality and wonderful colour combinations, making every day subjects appear exciting and unusual. Toni's subjects include many of her favourite things - interior and beach scenes, plants, flowers, cafes, animals, etc.

Toni paints boldly and imaginatively in vivid colours, often contrasted against a black background. Her highly detailed paintings use pattern and strong composition to effect.

For our Social Night, Toni will talk about her inspiration and painting approach, illustrated through her demonstration. There will be some of her cards for sale.

It should be a fascination night!!!



UP AND COMING SOCIAL NIGHTS

Fri May 27	Toni Corso Colourful acrylics
Fri June 24	Scott Eames Sculptor
Fri July 29	AGM No Social Night presentation
Fri Aug 26	Don Burrow on <i>The Colour of Light</i> Oil Still Life

SOCIAl NIGHT
FRIDAY 24th June
7.30pm
SCOTT EAMES
SCULPTOR



From the age of 2, when his father presented Scott with a lump of window putty with which to amuse himself, the young Scott instinctively discovered a naive passion for creating miniature figurine play companions. The passion remained as the years progressed, as did his natural sculptural skills and, supplemented with the study of anatomical picturebooks, Scott's initial amateurish figurines quickly evolved to develop into stunning sculptural renditions of the human condition, capturing in a creative combination of body pose and facial expression, the inner emotions of his chosen subjects.

For our Social Night, Scott will talk about his art process and inspiration. He will demonstrate his skills whilst continuing to work on a sculpture of a family member who will model for him.

It should be most intriguing!!

The photo shows Scott with his recently completed sculpture of Queen Adelaide to be sited in the Botanical Gardens. Photo taken by Kevin Hamdorf.



PICS FROM EVENTS



Alan Ramachandran opening the Autumn Exhibition



Lyn Lobo demonstrated her style at the March Social night.



Busy! Alan demonstrating at April Social Night



Please contact me if you have any news or information which would be interesting for our members at marglynch25@gmail.com

Guide to Attaching D-Rings to your frames

Wire and D-rings are the best hardware for hanging a picture because they are not only strong, but they are also easy to install and adjust.

D-rings look a little like a belt buckle attached to a strip of metal with screw holes. They are designed to be mounted flush against the back of the picture frame. The rings themselves face inward to connect the length of picture wire. Like picture wire, D-rings are available in a variety of sizes, the heavier your artwork, the larger the rings.

Attach the D-Rings.

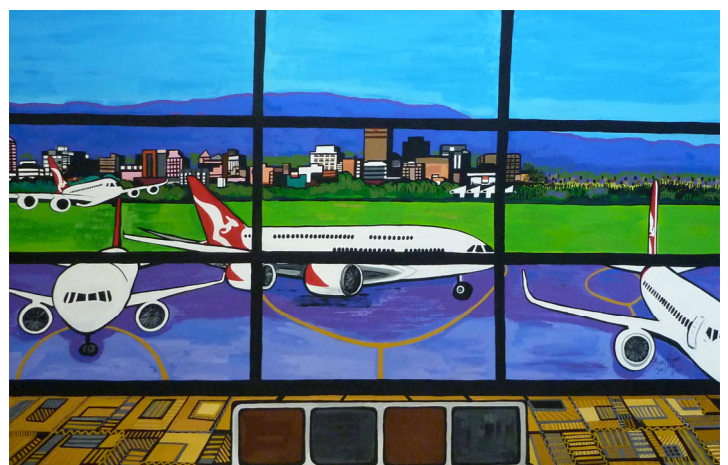
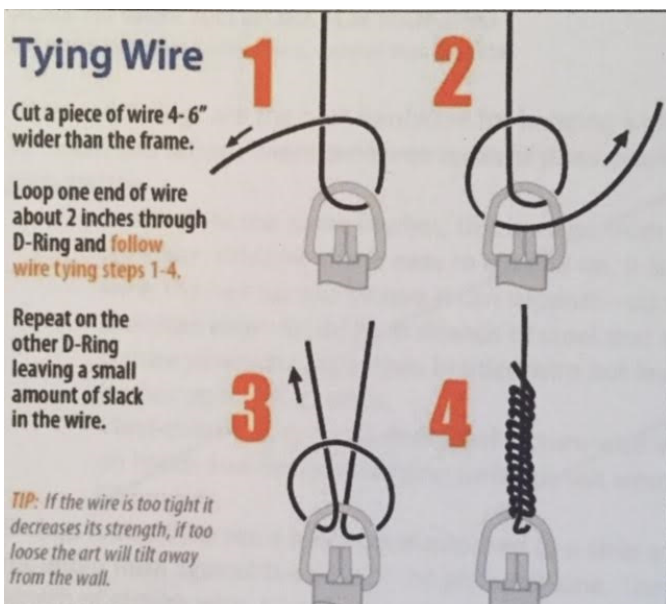
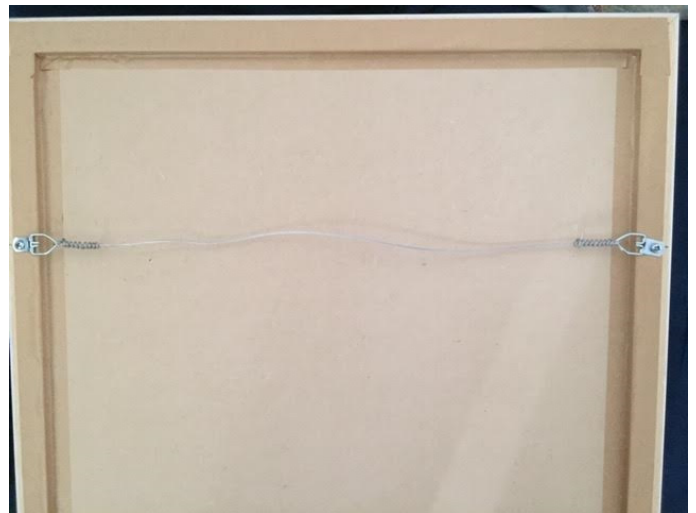
Decide how far from the top you want to position the D-rings. Aim for about a quarter or third of the way down from the top of the painting. Measure the distance, mark it with a pencil, and then repeat on the other side. Angle the D-rings so they are pointing upward at about 45 degrees, but do not screw them in pointing directly toward one another. Be sure you attach the D-rings at the same distance from the top edge. The wire should not show above the top edge of the painting, nor should the painting lean away from the wall when hung.

Measure and Cut the Wire.

Find the middle of the frame and pull the picture wire up gently until you reach a point about 5cms from the top. This is where you want your wire to hang once your picture is mounted on the wall.

Measure the picture wire 10cms through the eyelet and trim.

Insert about 10cms of picture wire through one of the D-rings. Once through the D-ring, pull this end underneath the wire that will go across the picture, then put it through the D-ring again from above. Pull the wire up through the loop, and that is the finished knot. Pull slightly taut but do not secure. Now repeat the same process of looping and knotting the picture wire to the D-ring on the other side, leaving 10cms of excess wire. Trim with your wire cutters.



Painting of Adelaide Airport by Toni Corso