



ADELAIDE Art Society

112 Margaret Street, North Adelaide 5006 Phone 0882674226

August 2023

<http://www.adelaideartsociety.com.au>

PRESIDENT'S NOTES

Dear members,

Well August 2023 already, what has become of the year? The state of the economy has shown itself on the Society, as it has with our members, I'm sure, with rising costs of everyday living. The committee has reluctantly decided to raise the cost of attending sketch groups, across all categories by \$2 to help cover our running costs. Also, annual membership fees will rise by \$5 to \$65 as of the 30th of June 2024.

Our glorious building, which we own, has been re-evaluated and consequently our insurance has almost doubled. This combined with the rise in electricity, ESL, security, cleaning etc, our AGM official audit has shown that our outgoing expense is more than our revenue.

As we are a non-profit organisation, all our committee members are volunteers and freely give their time and effort to maintain our wonderful society for you. To help with this the committee has introduced a group of volunteers which we named the Friends of the Adelaide Art Society, FAAS, to help with some of the tasks which are necessary to run our events. I thank the 15 members who have generously become FAAS members.

Facebook: we have a presence here, which is attracting quite a lot of interest. Our Sketch Group activities receive a popular audience resulting in a rise in the number of attendances. This is a wonderful form of advertising. Several other activities are posted on Facebook as well and these include members' exhibitions, achievements, latest works, etc.

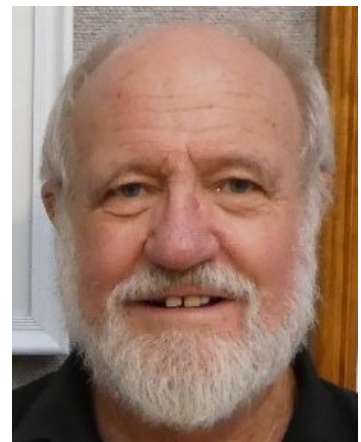
Our AGM was conducted on the 28th of July, and those present elected the management committee, Winston Head, president; Pam Saint; vice president; Helen Taylor, Treasurer; Marg Lynch, minute secretary; Chris Braham, Earleen Eastwood, Peter Ste-

vanz, Masha Yaghmaei and Simon Dawson.

Also elected were the members of our exhibition selection committee. Doug Thomson, Diana Bradshaw, Don Burrow, Shirley Page, Doriano Lopresto and Winston Head.

Chris Braham presented a wonderful graphic presentation of our year's activities, for the enjoyment of those present. This was followed by a supper and socialising.

Winston Head



Farm Shed on Airport Road, Middleton by Lyn Robins won the People's Choice Award in our Winter Exhibition and Lyn was also our featured artist.

SOCIETY NEWS

Welcome to new members, Ignacio Rojas, Catherine McMahon, Sharon Clough, Gavin Church, Elizabeth Bryan and Susan Forby.

Resigned—Elizabeth Moss, Betty Anderson, Barbara Rayner and Irene Christensen.

Congratulations to Lyn Robins for winning the **People's Choice Award**, Winter Exhibition 2023

UP AND COMING SOCIAL NIGHTS

25 August—Graham Dunstan—portrait in oils with model (see page 3)

29 September—Lorraine Graham—watercolour floral painting intuitively (see page 4)

27 October Kathy Doley— painting native flora in acrylics - fun and loose (see page 5)

November no Social Night

Christmas Lunch Sunday 3rd December at 12.30pm

NEXT EXHIBITION DATES

SPRING EXHIBITION

Receiving **Saturday 7/10/23 1.30pm**

Selection **Sunday 8/10/23 1.00pm**

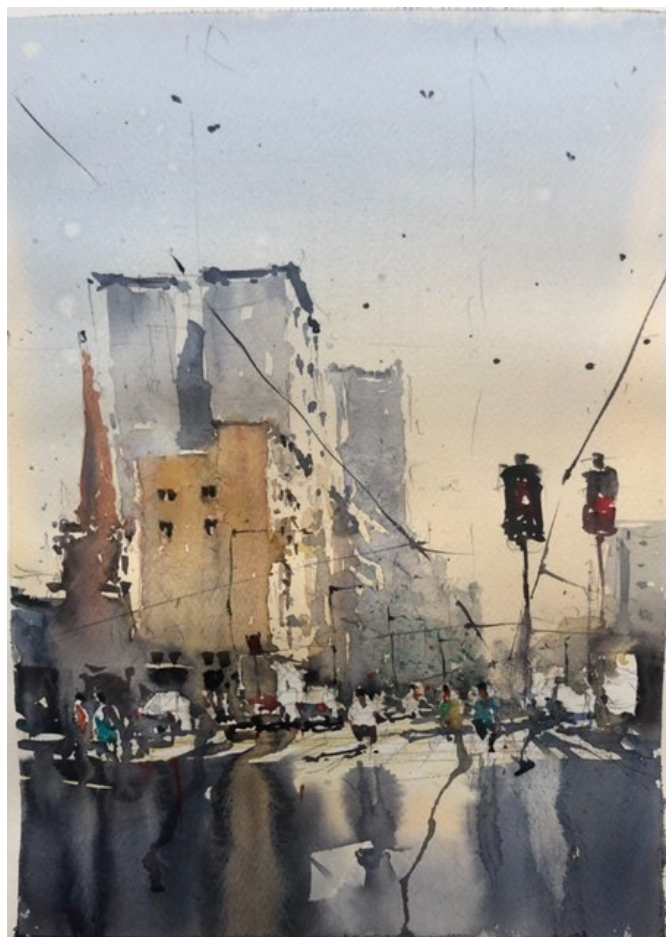
Hanging **Wednesday 11/10/23 1.00pm**

Opening **Saturday 14/10/23 11.30am**

Please contact me if you have any news or information which would be interesting for our members at
marglynch25@gmail.com



Jayson Castor with the fabulous watercolour painting he demonstrated for our June social night



Social Night Friday 25th August

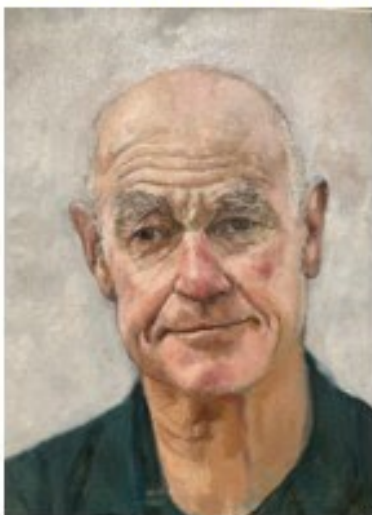
Portrait painting in oils with Graham Dunstan

Graham Dunstan studied Visual Arts after an established working history in the Electrical and Construction Industry. He completed a Visual Arts degree in 2016.



Graham's art incorporates elements of portraiture, which combine people and nature within the space. There are hints of the classical combined with elements of modern drawing and painting practices. He is influenced by the works of contemporary artists, Lucian Freud, George Condo and Colin Davidson.

Graham held a solo exhibition for SALA, at St Peters Cathedral in 2018. He enters exhibitions quarterly, at the Royal SA Society of Arts (RSASA) and has participated in the Victor Harbour and Fleurieu Art prizes. He was a finalist in 2021 Royal



South Australian Society of Arts Portrait prize. Graham demonstrates drawing and painting at the RSASA gallery on a regular basis during exhibitions.

For our Social Night, Graham will demonstrate portrait painting in oils using a model.

As usual, after the presentation, there will be a chance to socialise with fellow art enthusiasts over supper so bring a small something to share.

Adelaide Art Society Social Night Friday 29th Sept 7.30pm

With Lorraine Brown - *Watercolour Floral - Painting Intuitively*

Lorraine Brown has always felt a connection with the art of watercolour. The medium's ability to create unique and unexpected results, its risks and surprises, were qualities that especially attracted her.

Lorraine's expressive works are the product of her desire to story-tell and to capture the essence of a subject. She likes to play with creating texture and going anywhere her imagination might take her. She defines her vivid works as "expressive impressions", a blend of realism and abstraction, and is constantly searching for new ways to use her medium.

Lorraine tutors weekly classes in Adelaide and holds workshops in both city and regional areas and shares her demos worldwide on her You tube channel

Her paintings are held in private and corporate collections in Australia and overseas.

For our Social Night, Lorraine will demonstrate painting a watercolour inspired by flowers, using her own imaginative approach.

As usual, after the presentation, there will be a chance to socialise with fellow art enthusiasts over supper so bring a small something to share.



Social Night Friday 27th October 7.30pm

Painting Native Flora in Acrylics – With Kathy Doley

“I have loved art and the process ever since I can remember. Colouring-in was a much-loved past time as a child. It was when I was 15 years old my sister and her husband took me to my first oil painting lesson. I have been hooked ever since. I moved to Adelaide in my early twenties and immediately sought out an art class where I could continue learning.



I was under the tuition of traditional oil painter Peter Findlay for many years. I also attended courses at Adelaide Central School of Art, Norwood in my twenties, and have recently returned to study a Bachelor’s in Visual Art.

In 2015 the Splashout Art School owners recognised my passion and enthusiasm and I was asked to join their team. I am excited to have also recently joined the teaching staff at Sarah McDonald Art School”.

For our Social Night, Kathy will demonstrate painting a natural still life in acrylics. It should be a great way to finish our year of Social Nights
As usual, after the presentation, there will be a chance to socialise with fellow art enthusiasts over supper so bring a small something to share.



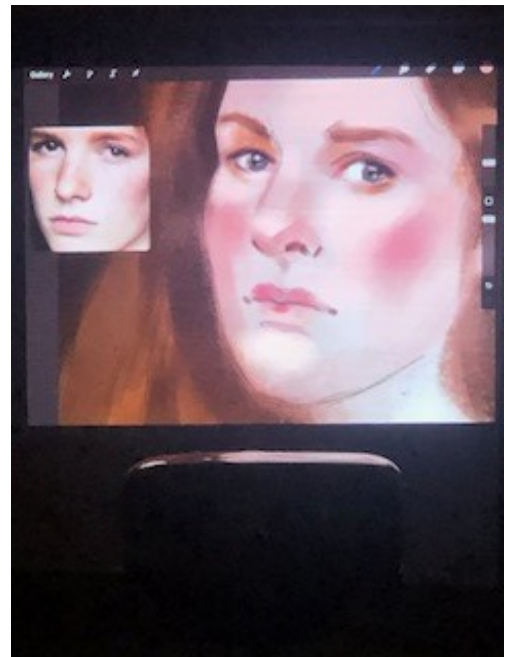
PICS FROM EVENTS



Winston introducing Peter Goers who opened our Winter exhibition. Crowd at opening and Jupe and Mignon at the desk.



Alex Beckinsale gave a fascinating demonstration creating a portrait on her iPad



LIFE DRAWING WEDNESDAY MORNING GROUP





A few of the paintings in the latest exhibition of Adelaide Art Society members at the Archer Hotel



*“Off the beaten Track”
oil on canvas
w60cm x h120cm*

“PLACES NEAR AND FAR”

*An exhibition of paintings by
CATHI STEER at
the MONASTERY
Exhibition starts 1st September to
27th September 2023*

*Opening hours: Monday - Friday
9.0 am to 3.30 pm*

*For Sales please contact Cathi
on 0439590369*

*The MONASTERY
15 Cross rd Glen Osmond 5064
ph 83388700
mob 0408899186
www.themonasery.net.au*

*Enquire at reception for
directions to exhibition*